

Newchurch Noticeboard

Issue 2 January 2025



OUR FREE COMMUNITY PARISH MAGAZINE

A look around Newchurch Parish - what's happening, local news and views of people and places, a little history ...

WHAT'S IN THIS ISSUE

	Page
What's on - Diary Dates	2
A Message from the Vicar	3
Our Parish Council	4
Swim the Wight	5
Newchurch Primary School	6
Vectis Astronomical Society	7
The Footpaths of Newchurch	10
Why Alverstone has no pubs	11
You ain't nothin' but a hound dog!	12
Garden tips for January to April	13
The Herbert Protocol - Safe and Sound	14
How to opt out of Junk Mail	15
Advertisers	8,9,15,16

Hello Newchurch!

Welcome to our new bigger second issue, and many thanks for all the positive feedback from our first publication at the end of September.

Already, we're getting articles and ideas from our residents and clubs - please keep them coming for the next and future issues - it's a magazine for all in the Parish, so we hope to represent as many of you and your interests as we can. Regular articles will be great, and this is starting now. And we hope to include more Diary Dates - so please let us know what's going on - so we can spread the word for you.

The magazine is free to everyone in the Parish of Newchurch, funded by advertisers and delivered by a team of residents. Please let us know of anyone who hasn't received their copy. There are extra copies in various public outlets, and it is also available on-line on the Parish website.

What's on - Diary Dates *(Correct at time of going to press)*

Parish Council: 20 Jan, 17 Feb, 17 Mar, 21 Apr - 7pm - Parish Hall.

Newchurch Male Voice Choir: Practices: Fridays - 7:30pm - Parish Hall.

Newchurch WI: 1st Monday in month - 7-9pm - Church Hall.

Island Flower Club: 2nd Wednesday in month - 2pm - Watery Lane.

Alverstone Art Group: Tuesdays - 7pm - Alverstone Old School Hall.

Church Craft Club: Fridays - 10am - Church Hall.

Alverstone WI: 2nd Thursday in month - 2pm - Alv. Old School Hall.

Newchurch Bell Ringers: Practice: Thursdays 7:30-9pm - Church.

See Newchurch Network, the Parish Directory, for other clubs & groups.

EDITORIAL: Rosey Messing rosey.messing@talk21.com

ADVERTISING: Steve Jewell iow54@yahoo.co.uk

DISTRIBUTED TO 1250+ HOUSEHOLDS:

3 times a year by councillors and residents (new distributors welcome)

ADVERTISING RATES (per issue):

Monochrome (inside): Half page £40, Quarter page £25, Small ad £15

Colour (back cover): Half page £50

NEXT ISSUE: Summer 2025 - Articles, feedback, ideas welcomed by 1 April

PRINTED BY: Careprint PO36 8ED 01983 664888 orders@careprint.uk

PRODUCED BY NEWCHURCH PARISH COUNCIL

Disclaimer: All articles and advertisements are taken in good faith.

Newchurch Parish Council cannot be responsible for any legal queries resulting from these.

Submitted articles do not necessarily reflect the view of the Parish Council.

We reserve the right not to print submitted articles, letters or advertisements.

A Message from the Vicar

The Long Goodbye

I expect that by now most of you will have come to know that I shall be leaving the Parish at Easter and retiring from Full Time Ministry.

It is really hard to say goodbye. Priesthood is a vocation that is a way of life, and being part of a community is a very big part of that. In the five years that we have been here, I feel that Malc and I have become part of the fabric of the communities of Newchurch, Arreton and Wroxall.

It was strange beginning this stage of Ministry in the middle of the Pandemic with so many restrictions and the churches even being closed for a time. Nonetheless, slowly but surely we have returned to a new normal.

At an Ordination of a Priest in the Church of England, promises are made to the Bishop regarding the nature of Priestly Ministry and for me central to this has been my promise to promote unity, peace and love (I have tried my best!) and my belief that God called me to do this work. When I was licensed, I was given by the Bishop and Archdeacon 'cure of souls' for all those living in the Parishes of Newchurch, Arreton and Wroxall. This rather archaic term is best described as the 'care' of souls and for me has meant a responsibility to care for all in the Parish whether a church goer or not and to be available to all in a time of need; care that involves daily prayers for all the people of these communities and beyond. This privileged responsibility has brought me into contact with so many wonderful people as I have shared in the joys and sorrows of human life. It is this human contact at these important junctions in life that I shall miss the most.

What then when I am gone?

Well, there have been churches in Newchurch and Arreton for over 900 years and in Wroxall for more than a century and I have been privileged to play just a tiny tiny part of the life of these churches. Whoever comes after me will pick up the baton and I hope will continue to be a presence in these wonderful places and continue to promote peace, unity and love, (and even enjoy a pint or two of HSB in the local hostelry).

God Bless and thank you,

Kath x

Our Parish Council (PC)

Here's a brief summary of what we've been doing in 2024:

- The PC has endeavoured to look out for any local problems and to respond to concerns from Parishioners, taking action as required. Concerns included flooding, pot holes in roads, traffic speeding, large vehicles on narrow roads, fly-tipping, dumped vehicles, dog fouling and bins, rat infestation, rights of way. The PC has limited powers to address many of the major issues, and we referred them to the relevant authorities. We have also called special meetings to bring together those responsible or with an interest in the matter. We maintain contact with the Police, the Environment Agency, IW Council, Island Roads, HIWWT, Natural Enterprise and others.
- We reviewed planning applications and made recommendations and comments to the Planning Department, and reported planning decisions to Parishioners via the monthly PC minutes posted on the PC website and notice-boards.
- We fulfilled our responsibility to manage and maintain the Parish Hall, the Parish Cemetery, the Community Garden and the parish notice-boards and website, on which details of meetings and minutes are posted.
- As in every year, we reviewed the precept (the amount payable by Parishioners as part of the Council Tax).
- Throughout the year, we maintained the Parish accounts, audited for the AGM.
- We reviewed policies in line with Island and National local council guidelines, and attended training as needed.
- The November Meeting was particularly well attended by Parishioners keen to improve road safety at Apse Heath following recent accidents and near-misses. Three members of the constabulary were also present. The meeting agreed on the option to replace the mini-roundabout with traffic lights and controlled pedestrian crossings. There is no guarantee that the Highway Authority will agree to such a scheme or that funding will be available, but we will press for money ring-fenced for safety improvements on the Lake to Blackwater road to be used in part at Apse Heath.
- We have recently funded a new defibrillator to be installed at Raj's Premier in Apse Heath. The generosity of Raj's Premier in accommodating this facility is much appreciated.

Parishioners are encouraged to take advantage of the Community Garden below the Church wall. It's a lovely place for a quiet sit or gentle stroll.

Elections for both the PC and the IWC will be held in May 2025. This presents an opportunity for anyone interested in serving the local community to seek nomination for election. If you'd like to know more, please contact the Parish Clerk or Chairman.

Chairman: Roy Bevan 01983 865249

Parish Clerk: Gareth Hughes 01983 865024 07528 339937
clerk@newchurchparish.co.uk

We meet at 7pm on the third Monday each month in Newchurch Parish Hall. If you wish to bring a local topic to the attention of the PC, please let the Parish Clerk know at least one week before the meeting.

An Introduction to Swim the Wight

Picture the scene ... a crisp and very cold Saturday morning. Beautiful clear blue sky, layer of bright white frost covering the Island. One of those wonderful winter mornings. Just right for a walk, or maybe something just a little different. All across the Island are 'crazy' people scraping ice off cars, wrapped up in fluffy scarves, thermal hats, thick socks and furry boots. In their bags they have extra jumpers, thermal long johns, hot water bottles, and thermos flasks of hot coffee. What are they doing, where are they going ... into the sea, of course! What else would they do together on such a beautiful Saturday!

But why??? That's the question...well that's the question my husband continually asks. But if you've ever done it, you know why.

So if you've ever had a hankering to get in the sea, if you're one of those people that stands and watches us, with maybe just a little bit of envy, then please do come and join us. You can find all the information you need at swimthewight.org.uk

Book yourself onto an acclimatisation session and learn everything you need to know about swimming safely in the sea. Then come and dip with us. All dips are supervised and safety comes first. I've been a member since May 2023. Looking forward to welcoming you soon.

Jo Smith

joanneellen.smith@hotmail.com

Newchurch Primary School's Busy Autumn Term

As the leaves have fallen and the days have grown shorter, Newchurch Primary School has been bustling with activity throughout the Autumn term. From exciting classroom projects to engaging extra-curricular activities, our students and staff have been working hard and making the most of every opportunity.

Highlights of the Term:

Poetry Focus: Our classrooms have been alive with creativity and innovation. Each class has been named after a poet and the children have even taken part in their first performance poetry assembly.

Sports and Competitions: Our sports teams have been active, participating in local competitions and bringing home several trophies. The spirit of teamwork, sportsmanship and resilience has been truly inspiring and we are pleased that our table tennis team has qualified for the Hampshire final and our Sportshall Athletics team won their recent competition to progress to the IOW finals!

Community Engagement: We have strengthened our ties with the local community through various events and initiatives. Our Year 5 pupils recently undertook fieldwork around the village, looking at how the land use has changed over time. Year 2 visited the Garlic Farm earlier in the term, whilst our popular running club has taken advantage of the many local footpaths every week! We also had a special visit from WWII veteran Alec Penstone, who told us all about his life in the Navy and working on submarines from the age of 14!

Our Christmas festivities included the annual Nativity play and carol singing - much enjoyed by all. We look forward to a new year of fun and achievement, and thank all parents, teachers and community members for your continued support.

If you have a child due to start school in September 2025, please contact the school office (01983 865210) for a tour as we would love to show you what makes Newchurch School special.

Warm wishes,
The Newchurch Primary School Team

It doesn't matter about being the best as long as you do your best. That's how you find out who you are and what you are. *Kriss Akubusi 1993*

Vectis Astronomical Society

Welcome!

Starting with the next issue, this page will outline some of the things you can see in the sky on a clear night from the Isle of Wight. You won't need great knowledge or any fancy equipment.

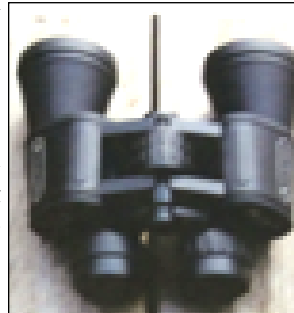
A few things that you should know before starting though:

- ***Never look directly at the Sun!***
This is very dangerous and must never be done.
- *When outside at night, make sure you wear warm clothes.*
- *Try to view things from a safe dark place with minimum artificial lighting.*
- *Once outside give your eyes about 15 minutes to get used to the dark before starting.*

What will I need?

Not much really! Your eyes should be enough to get started - you can think about special equipment later. That said, a pair of ordinary binoculars will give you a better view as will a small bird-watching 'scope.

If you don't have binoculars, they are not too expensive and can often be found in either Lidl or Aldi for less than £20. Just be sure to get something that looks like the ones shown. They can be mounted on a tripod to avoid vibration. Don't buy anything with a zoom feature.



What will I be able to see?

This time of year is about the best for astronomy so you should be able to see plenty of star constellations, the moon, and even some planets.

For most of the time, we will be looking South so it's a good idea to find a location with a good view in that direction - that means away from houses and trees that may block your view.

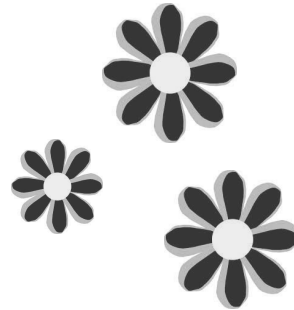
Another useful item is **Stellarium**. This is a program for PC and Mac which shows tonight's night sky in detail. The app is completely free (see <http://www.stellarium.org>)

*See you next Issue
Brian Curd*

The Observatory in Watery Lane is open every Thursday from 8pm.

The Moreys welcome you to
Ager Farm Nursery

Lovely plants, reasonable
prices & happy to help



Newchurch, Isle of Wight PO36 0LY
(Junction of Watery Lane and Harbours Lake Road)
01983 867607
agerfarmnursery@gmail.com

BP BOON WINDOW CLEANING

A stylized logo consisting of three jagged peaks of varying heights, resembling a mountain range or a roofline. The peaks are solid black.

07484 806 531

Brian Boon

80 New Street Newport PO30 1PX

Please mention that you saw these ads in Newchurch Noticeboard magazine. Thank you.

ABBOTT'S

CARPETS & FLOORING



☎ 01983 401 012

✉ info@abbottsflooring.com

Local, independent, family-run
flooring contractor with over 35 years
specialist experience in:

Carpet

Vinyl

Laminate

Luxury Vinyl Tiles

Safety, Contract & Commercial Flooring



WightSweep

PROFESSIONAL CHIMNEY SWEEP SERVICES



- *All Flues Swept*
- *Dust Control Technology*
- *Nest Removal*
- *CCTV Inspections*
- *Pots & Cows Fitted*
- *Stove Service & Spares*
- *Stoves & Liners Installed*

See us online
www.wightsweep.com

Isle of Wight
☎ **533057**
☎ **07521 399376**



burn(right)
Solid Fuel Combustion Advice



Find us on:
facebook

Please mention that you saw our ads in Newchurch Noticeboard magazine. Thank you.

The Footpaths of Newchurch

I first met Jill Green in 2022 when we were working out a suitable route for Beating the Newchurch Parish Bounds. Jill's knowledge of Newchurch footpaths is extensive. I met her recently to find out more. This is hopefully the first of several articles from Jill on the footpaths of Newchurch and others, and exploring some of her many interests. Over to Jill ...

"When we came to live on the Island in 1976, one of the first things we did was to join the Isle of Wight Ramblers. Three reasons: to go on pleasant country walks, to get to know the footpath network, also to meet people.

Later I was asked to take on the role of Parish Footpath Walker for Newchurch. My friend Barbara Aze and I agreed to do this together. We had such happy times finding all sixty seven paths. Our job was to check for footbridges, stiles, gates, bridle gates, sign posts, steps and obstructions. We reported our findings to Joan Duncan, the Island Ramblers Footpaths Secretary, and had regular meetings with the other Island Parish Footpath Walkers. Joan Duncan held monthly meetings with the Council's Rights of Way Department.

The footpaths and bridleways we use today are so very much improved but we still need to be vigilant. During my time as your Footpath Walker, I have been involved with three public enquiries to save footpaths. We won one and saved the footpath from extinguishment - lost another - and the third didn't turn out as we wished (the path is in a gully that gets very wet). Sadly two beautiful paths have been lost forever.

All this takes a great deal of time, and it's important to know the law. It's not true that a footpath is lost if it is not walked, nevertheless it is important to walk it - and on the correct line. The only way to remove a path is through the legal system. Also, it's against the law for a land owner to put up notices for the public to take another route if they want a path diverted.

Our Island footpaths are part of our heritage; historically they provided routes for livestock to be herded to market, and for folk to get about and to get to Church before the days of motor transport. Nowadays they provide a great opportunity for us all to get out for wonderful walks in our beautiful countryside. Our paths are precious and we must look after them, for now and the future. I'm now in my 80's, and I still walk all our Parish footpaths several times each year."

Why Alverstone has no pubs

When asked this question recently, it set me on a course to find out more. It's all to do with Richard Everard Webster, 1st Viscount Alverstone, a British barrister, Conservative politician and judge, 1842-1915. His political career was mainly associated with church work; and his speeches were distinguished for gravity and earnestness. He was very much against the evils of alcohol - hence no pubs in Alverstone.

He was educated at King's College School, Charterhouse, and Trinity College, Cambridge, which he represented as an athlete. The University Alverstone Club is named in his honour. He loved cricket and was President of Surrey County Cricket Club from 1895 until his death, and President of the Marylebone Cricket Club (MCC) in 1903.

As Attorney General for England, his cases included the Eliza Armstrong sex slavery case which led to the Criminal Law Amendment Act 1885. He was elected as MP for Launceston, then exchanged this seat for the Isle of Wight, which he continued to represent until his elevation to the House of Lords.



In 1890 he was leading counsel for The Times in the Parnell inquiry, and he represented Great Britain in the Bering Sea arbitration in 1893, and again in 1898 in boundary negotiations between British Guiana and Venezuela.

In 1900, he was made Baron Alverstone, of Alverstone in the County of Southampton. He was also made Master of the Rolls, and elevated to the office of Lord Chief Justice of England. He presided over some notable trials of the era including the Crippen case.

In 1902 he was in South Africa, looking into the use of martial law sentences during the Second Boer War, and in 1903 his vote decided the dispute against the Canadians over the Alaska boundary - as a result, he became extremely unpopular in Canada.

Lord Alverstone presented the Arthur Webster Hospital to Shanklin in 1905, in memory of his only son, Arthur Harold Webster, who died of appendicitis in 1902. The building is still in use as the Arthur Webster Clinic.

He was generous with his money, delighted in playing billiards and singing drawing-room songs, and was an assiduous church-goer, and for forty years he sang in the choir at Kensington Parish Church. His legacy includes several houses in Alverstone. His Island home was Alverstone Manor, now 22 Luccombe Road, Shanklin,

In 1886, he commissioned Winterfold House in Cranleigh. He retired in 1913, and was created Viscount Alverstone. He died in 1915, aged 72, and is buried at West Norwood Cemetery under a Celtic cross. His peerages became extinct on his death.

You ain't nothin' but a hound dog!

You may have heard of TrackAdog. We are a charitable trust made up of volunteers who help find lost dogs here on the Island with our amazing tracking dogs and ground searchers.

Did you know that a few of us live here in Newchurch and got involved with helping Amazon World find their escaped raccoons? We offered our help as we had three trained dogs close by. What the staff at Amazon World were not expecting was a fully trained Coonhound! If you haven't heard of a Coonhound, they are an American breed of hound, specifically bred to track raccoons!

Our gorgeous boy, Elvis, belongs to Michelle who lives in Newchurch. When Michelle brought him home to the Island, we're sure they never thought they would ever even see a raccoon on the Isle of Wight, let alone give Elvis the chance to be doing what he was born to do - track a raccoon! But that is exactly what he did.

Elvis and Fraser the Labrador were able to track the raccoons to two different areas of the zoo. Using the raccoons bedding as a scent item, this let the keepers know the areas to search.



Then the keepers and TrackAdog ground searchers searched in the dark using thermal scopes. When the raccoons were located, they had squeezed into tiny cracks in the walls and climbed trees. The keepers then put out traps and one by one over several nights they managed to capture all four - safe and sound.

PASSING THOUGHTS

It is only about things that do not interest one that one can have an unbiased opinion, which is no doubt the reason why an unbiased opinion is valueless.

Oscar Wilde

Perhaps the most valuable result of all education is the ability to make yourself do the thing you have to do, when it ought to be done, whether you like it or not.

Thomas Huxley

It is better to be a nobody who accomplishes something, than a somebody who accomplishes nothing.

Anon

Garden tips for January to April



January: Clean and ventilate your greenhouse. Keep dead-heading winter bedding to ensure a good display. Gooseberries can be pruned now: remove branches scraping the ground and some of the older branches - the aim is to end up with an open-centred goblet shape. Trim hellebores as they can suffer from a black spot disease which disfigures the leaves: cut any affected foliage off at the base so it doesn't detract from the flowers.

February: Clean out your shed. Prune and feed roses. As long as the ground isn't waterlogged or frozen, you can move most deciduous shrubs this month. Start chitting early potatoes. Sow peppers and chillies as these need a long growing season in which to grow and ripen fruit over the summer.

March: Tidy up borders. Move evergreen shrubs and trees unless the ground is frozen. Once the weeds begin to grow, this signals that the soil is warm enough for seed sowing outdoors - sow hardy vegetables: broad beans, carrots and parsnips. Sow onion sets. Tomatoes, cucumbers, aubergines and sweet peppers can all be sown indoors. Keep them protected from any risk of frost.

April: Empty your compost bin and use it as a mulch on garden borders before the soil becomes too dry. Put any un-rotted material back into the bin. Plant out early and second early seed potatoes earlier in April, followed by maincrops later in the month - plant in holes or trenches, covering tubers with at least 2.5cm of soil. Why not start a sunflower competition? Choose a tall cultivar such as "Giraffe": sow one seed per pot and plant out when risk of frost has passed. See who grows the tallest one amongst your family and friends.

Come along and join us. We're Newchurch Horticultural Society. We meet at 7:30pm on the second Monday of the month in Watery Lane Pavilion. Our meetings generally commence with a speaker, usually horticultural or wildlife and nature, followed by refreshments and a raffle. In addition to our meetings, we also organise visits to gardens both on the Island and mainland.

The January meeting will be our annual quiz and this will be held at the Church Hall. February sees our Annual Society Dinner, and at our March meeting Ian Elliott, President of the Isle of Wight Bonsai Society, will be giving a talk on Bonsai.

If this sounds of interest please do come along to our next meeting or contact the Society's secretary, Glendda Graves, on 404041.

The Herbert Protocol - Safe and Found

The Herbert Protocol is a collaboration between Isle of Wight Search and Rescue (Wight SAR), Hampshire & IoW Constabulary, and IOW Alzheimer's Cafes.

There is nothing more frightening than when a loved one, friend or neighbour fails to turn up when they should. For people living with dementia, Alzheimer's or other mental vulnerability - The Herbert Protocol could give them and you peace of mind.

This is part of a national scheme which encourages carers/family and neighbours to compile useful information which could be used in the event of a vulnerable person going missing. The idea is to complete a "life history" form recording all the vital information required for the Police to start an immediate search. This includes description, photograph, medication, mobile numbers, significant places in that person's life and places they have previously been located. The form can be handed immediately to the Police and reduces the time taken in gathering this vital information and will inform the investigation to locate and bring them home more quickly. The Police only need the form at the point that the person is reported missing, and will be returned once the person is found.

The form should be stored where it can be found quickly, and copies should be shared with other family members, friends and neighbours. You are encouraged to keep the form up to date for future use.

How to access the form

Download the form via the link [herbert-protocol-form.pdf](#)

A printed copy will need to be handed to the Police Officer who attends to take the Missing Person's Report. Or save the form, complete, store and share it electronically.

What to do if the person goes missing

After you have conducted an 'open door' search of the address, grounds and outbuildings and you believe a person is missing, alert the Police via 999 at the earliest opportunity. Tell the Police Operator that you have the Herbert Protocol person profile.

Newchurch Remembered - Revisited

The collection of new stories from Newchurch residents is now underway. If you would like yours included, let the Editor know (see page 2). We'll be in touch later in the year.

How to opt out of Junk Mail

If only Junk Mail was unlawful, this wouldn't be necessary! It would also be kinder on the environment.

I picked up this information on BBC Morning Live:

Unaddressed Mail

- Form from Royal Mail / Takes 6 weeks / Re-register in 2 years.
- Form from 'Your Choice' Mail Preference Scheme / Takes 3 months / Re-register in 2 years.

Addressed UK Residential Mail (from a Mailing List)

Contact Mailing Preference Service (UK):

- Register by phone or on-line / Takes 4 months / No need to re-register

For a company you've dealt with before:

Write to them: "Please stop processing my personal data for direct marketing purposes in accordance with Article 21 of GDPR (General Data Protection Regulations)". State the timeframe you wish this to cover.

If mail comes in an envelope, personally addressed:

Send it back with message "Unsolicited mail - please return to Sender".

You can also get a label from the Council "NO JUNK MAIL PLEASE" or make your own.

Island **MEMORIALS**

Bespoke, Traditional and Contemporary Memorials
Crafted in Natural Stone, Granite & Marble.
Additional Inscriptions & Renovations.



Presented by: Jason French

BRAMM

British Register of Accredited
Memorial Masons

Tel: 01983 866495

www.islandmemorials.co.uk islandmemorials@gmail.com

Island Memorials Ltd
Providing A Complete Monumental Masonry Service
to the Island Community

CAREPRINT.UK

— DESIGN > PRINT > DELIVER —

Your Local Specialist Design & Print Company

Creating job opportunities for young people on the island

Quick response

Competitive prices

High quality

Funeral Stationery
Wedding Stationery
Photo Calendars
General Print
Large Format Print

Custom Labels
Printed Stationery
Photo Mugs
Ring Binders
... and more!



Careprint.UK
J Dempsey's Yard
College Close,
Sandown PO36 8ED



orders@careprint.uk



01983 664888



www.careprint.uk

Tel: 01983
866006

Unit 1, Winford Farm,
Watery Lane, Newchurch,
Sandown,
Isle of Wight,
PO36 0LX

**UNIQUE
WINDOWS
(IOW) LIMITED**

Email: info@uniquewindowsiow.co.uk

Please mention that you saw these ads in Newchurch Noticeboard magazine. Thank you.